



Electrolux
PROFESSIONAL

**Modular Cooking Range Line
thermaline 90 - 300 mm Closed
base, 1 Side - H=550**

ITEM # _____

MODEL # _____

NAME # _____

SIS # _____

AIA # _____



589632 (MC3ADOCOOO) Closed base, 300mm

Short Form Specification

Item No. _____

300 mm wide closed base compartment. Unit constructed according to DIN 18860_2 with 70 mm recessed plinth. Internal frame for heavy duty sturdiness in 2 mm and 3 mm in 1.4301 (AISI 304). 2 mm top in 1.4301 (AISI 304). Flat surface construction, easily cle

Main Features

- All major components may be easily accessed from the front.
- THERMODUL connection system creates a seamless work top when units are connected to each other thus avoiding soil penetrating vital components and facilitating the removal of units in case of replacement or service.
- Unit constructed according to DIN 18860_2 with 70 mm recessed plinth.
- Closed base compartment to be installed below modular top units.

Construction

- IPX5 water resistance certification.
- 2 mm top in 1.4301 (AISI 304).
- Flat surface construction with minimal hidden areas to easily clean all surfaces
- Internal frame for heavy duty sturdiness in stainless steel.

APPROVAL: _____



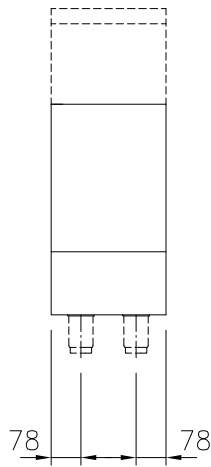
Experience the Excellence
www.electroluxprofessional.com



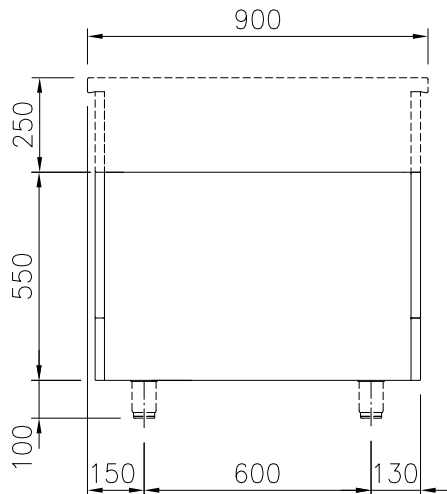
Electrolux
PROFESSIONAL

Modular Cooking Range Line thermaline 90 - 300 mm Closed base, 1 Side - H=550

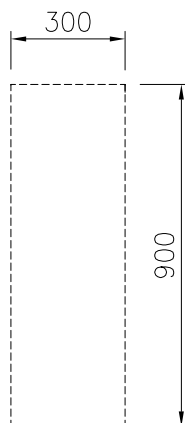
Front



Side



Top



Key Information:

External dimensions, Width:	
589632 (MC3ADOC000)	300 mm
External dimensions, Depth:	900 mm
External dimensions, Height:	550 mm
Net weight:	9.5 kg



Modular Cooking Range Line
thermaline 90 - 300 mm Closed base, 1 Side - H=550

The company reserves the right to make modifications to the products without prior notice. All information correct at time of printing.

2025.12.12

Optional Accessories

- Stainless steel side panel (12mm), 900x800mm, freestanding PNC 912511 ☐
- Stainless steel front kicking strip, 300mm width PNC 912593 ☐
- Stainless steel side kicking strips left and right, freestanding, 900mm width PNC 912621 ☐
- Stainless steel side kicking strips left and right, wall mounted, 900mm width PNC 912624 ☐
- Stainless steel side kicking strips left and right, back-to-back, 1800mm width PNC 912627 ☐
- Stainless steel plinth, against wall, 300mm width PNC 912896 ☐
- Stainless steel plinth, freestanding, 300mm width PNC 912915 ☐
- Stainless steel panel (12mm) 900x800mm, against wall, left side PNC 913102 ☐
- Stainless steel panel (12mm) 900x800mm, against wall, right side PNC 913106 ☐
- Back panel, 300x550mm, for bases and units, one-side operated PNC 913177 ☐
- Stainless steel side panel, left, H=800, flush PNC 913224 ☐
- Stainless steel side panel, left, H=800, flush PNC 913225 ☐
- - NOT TRANSLATED - PNC 913259 ☐
- - NOT TRANSLATED - PNC 913268 ☐
- - NOT TRANSLATED - PNC 913270 ☐
- - NOT TRANSLATED - PNC 913277 ☐
- - NOT TRANSLATED - PNC 913278 ☐
- STAINLESS STEEL DIVIDING PANEL 900X800MM LEFT/RIGHT PNC 913673 ☐
- STAINLESS STEEL SIDE COVER PANEL, FLUSH 900X800MM LEFT/RIGHT PNC 913689 ☐